

Organic energy for organic dairy

BIOGAS IS DELIVERED TO THE SÖBBEKE DAIRY VIA MICROGAS LINE



The Söbbeke organic dairy processes about 50 million liters of organic milk each year and transforms it into cheese and yogurt specialties, as well as dairy products of all kinds. True to the company philosophy, that its “every action is to serve the environment and our fellow human beings,” Söbbeke has already been working with renewable energy since 2006.

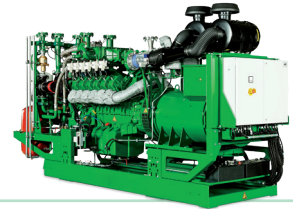
1.2 kilometer biogas line to the heat consumer

The biogas is produced roughly 1.2 kilometers away from the Söbbeke dairy, and not all of the biogas is used in the biogas plant. Only a small CHP is connected to the fermenter itself, which requires heat for the fermentation process. In order to make optimal use of the surplus gas, it is routed to the dairy, where it is transformed into heat and power by way of a “satellite CHP”.



Hot water for cleaning reusable glasses

The avus 500b, with an electrical output of 624 kW and supply temperature of 95 °C, feeds a 150,000 liter buffer tank and provides thermal energy for cleaning reusable glasses and bottles, as well as tanks, filling machines and more. Roughly one third of the heat consumption is covered by the CHP plant. This project demonstrates the great potential of renewable heat & power cogeneration. Thanks to the optimal combination of energy production, transport and conversion, the plant concept is an ideal match for the philosophy of the Söbbeke organic dairy.



Molkerei Söbbeke GmbH

soebbeke.de

avus 500b

Biogas

624 kW electrical

700 kW thermal

Concrete acoustic enclosure

