

Secure and sustainable

COGENERATION INCREASES SUPPLY SECURITY AT KROMBACHER



Resource conservation, as well as environmental and climate friendliness, are a key focus of the Krombacher brewery's heat and power supply concept. The avus from 2G has now increased the security of supply at the company's headquarters in Kreuztal-Krombach.

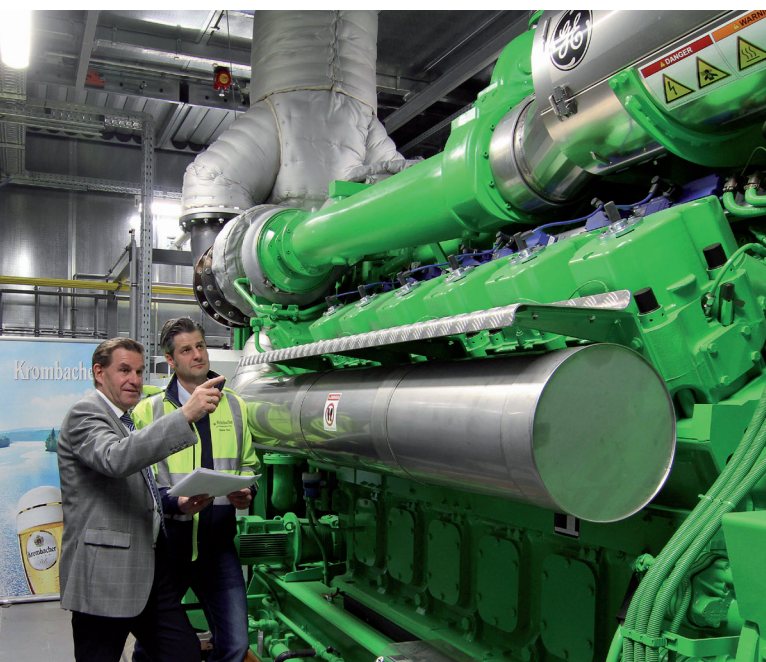
Consistently sustainable operation at the Krombacher brewery

The CHP plant commissioned at the Krombacher brewery is a highly successful combination of cost-effectiveness, efficiency and climate

With this CHP plant, we've reached another milestone in our sustainability strategy in terms of resource conservation and environmental compatibility.

Helmut Schaller | Technology Manager
Krombacher Brauerei GmbH & Co. KG

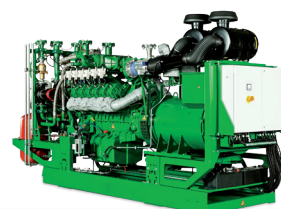
protection, fitting seamlessly into the Krombacher brewery's sustainability strategy. The Siegerland brewers had already switched the entire energy procurement to green electricity certified by the OK Power label in 2012, the commissioning of the new CHP plant takes them another step forward in meeting the company's sustainability objectives which they have announced in their own sustainability report.



A further milestone reached with combined heat and power

The avus 2000a high-efficiency energy plant, with a medium-voltage generator and a rated electrical output of 2 MW, was installed in an existing boiler house with an additional noise insulation hood. Krombacher made its supplementary investment with the goal of using the CHP plant to cover the base load of the energy supply. The internal power supply is to reduce the amount of electricity purchased by 25%. Beyond that, the avus supplied the Krombacher brewery with climate-friendly heating and process heat. This contributes to the security of supply at the site in Kreuztal with its emergency power mode option.

Helmut Schaller, Technology Manager at Krombacher: "With this CHP plant, we've reached another milestone in our sustainability strategy in terms of resource conservation and environmental compatibility."



Krombacher Brauerei GmbH & Co. KG
krombacher.de

avus 2000a
Natural gas
2.000 kW electrical
1.977 kW thermal
Engine room installation

